

Consumer Price Index October 2020

During the past several months, COVID-19 has restricted the movement of people and forced many businesses to change their normal operations. This affected how Statistics Canada conducted the Consumer Price Index in October. In-person data collection was done remotely, supplemented by alternate data sources, and a higher level of data imputation occurred due to the reduced availability of some products and services.

Table 1: All-Items Consumer Price Index (2002 = 100)

	20-Oct	20-Sep	19-Oct	% Change from		12-Month Average		
				20-Sep	19-Oct	19-Nov 20-Oct	18-Nov 19-Oct	% Change
Yellowknife	138.6	137.1	139.4	1.1	-0.6	139.1	138.5	0.4
Canada	137.5	136.9	136.6	0.4	0.7	136.8	135.5	1.0
Edmonton	145.1	144.9	143.9	0.1	0.8	144.5	142.7	1.3
Whitehorse	134.5	133.9	133.9	0.4	0.4	134.4	132.7	1.3
Iqaluit	130.8	130.3	131.1	0.4	-0.2	131.5	131.1	0.3

Statistics Canada indicates that in October 2020 the Yellowknife All-Items Consumer Price Index fell by 0.6% compared to one year ago. By comparison, the annual price change in September was 0.7% for Canada, 0.8% for Edmonton, 0.4% for Whitehorse and -0.2% for Iqaluit.

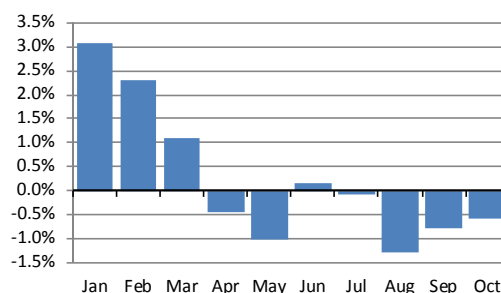
Since April, there have been six annual price declines in Yellowknife; the last time there were multiple declines in a year was in 2009 during the financial crisis.

Between October 2019 and October 2020, Yellowknife consumer prices decreased in half of the eight major components. Shelter contributed to the decline, largely a result of the 11.3% decline in water, fuel and electricity.

Fuel oil & other fuels fell 28.0% between October 2019 and October 2020 while electricity prices remained the same over this period. Gasoline fell by 10.0% resulting in an overall decrease of 12.9% in energy prices.

The fall in energy prices was not unique to Yellowknife as most jurisdictions experienced a decline between October 2019 and October 2020. Alberta was the only province to experience a rise in energy prices over this period.

**Annual (12 month) Change in Yellowknife CPI
January 2020 to October 2020**



**Percentage Change in Prices - Energy
October 2019 to October 2020**

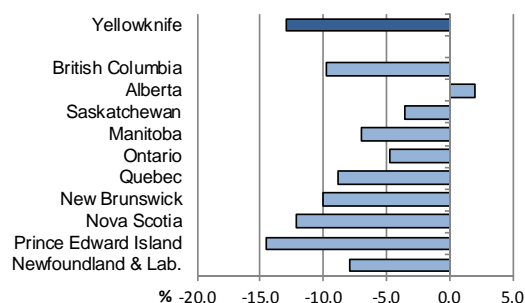


TABLE 2: CONSUMER PRICE INDEX, OCTOBER 2020
SELECTED INDEXES, YELLOWKNIFE (2002 = 100)

	20-Oct	20-Sep	19-Oct	% Change from	
				20-Sep	19-Oct
All Items	138.6	137.1	139.4	1.1	-0.6
Food	145.3	145.3	145.2	-	0.1
Food from Stores	141.9	142.0	142.2	-0.1	-0.2
Food from Restaurants	155.2	154.6	153.6	0.4	1.0
Shelter	159.9	159.6	161.3	0.2	-0.9
Water, Fuel & Electricity	190.0	188.8	214.1	0.6	-11.3
Household Operations & Furnishings	113.5	111.9	113.4	1.4	0.1
Household Operations	122.5	119.1	121.6	2.9	0.7
Household Furnishings	94.0	95.7	95.2	-1.8	-1.3
Clothing & Footwear	105.5	102.9	110.0	2.5	-4.1
Clothing	100.2	97.4	103.1	2.9	-2.8
Footwear	81.9	80.9	95.6	1.2	-14.3
Clothing Accessories & Jewellery	162.1	155.5	161.9	4.2	0.1
Clothing Material, Notions & Services	162.8	162.8	142.5	-	14.2
Transportation	139.6	135.8	139.6	2.8	-
Private Transportation	137.7	132.9	136.5	3.6	0.9
Public Transportation	152.4	152.9	157.8	-0.3	-3.4
Health & Personal Care	127.0	124.6	124.0	1.9	2.4
Health Care	122.1	122.6	124.8	-0.4	-2.2
Personal Care	131.1	126.7	123.9	3.5	5.8
Recreation, Education & Reading	108.7	108.5	110.2	0.2	-1.4
Recreation	103.8	103.5	106.2	0.3	-2.3
Education & Reading	138.4	138.3	132.5	0.1	4.5
Alcoholic Beverages & Tobacco Products	179.9	179.4	181.6	0.3	-0.9
Alcoholic Beverages	145.8	145.8	146.2	-	-0.3
Tobacco Products & Smokers' Supplies	249.2	247.3	237.1	0.8	5.1
ENERGY AND ITS COMPONENTS:					
Energy	169.3	167.3	194.4	1.2	-12.9
Electricity	202.4	202.4	202.4	-	-
Fuel Oil And Other Fuels	185.8	182.5	258.1	1.8	-28.0
Natural Gas
Gasoline	137.3	134.2	152.6	2.3	-10.0
Fuel, Parts and Supplies for Rect'l Vehicles

Notes:

Source: Statistics Canada, Table 18-10-0004-01 Consumer Price Index, monthly, not seasonally adjusted.

CPI values for Yellowknife and Whitehorse include estimates of price changes for owned accommodation based on the price of rental accommodation. As a result, the all-items indexes published for these centres are not strictly comparable to those for Canada and Edmonton.

Next release of CPI: December 16, 2020.